

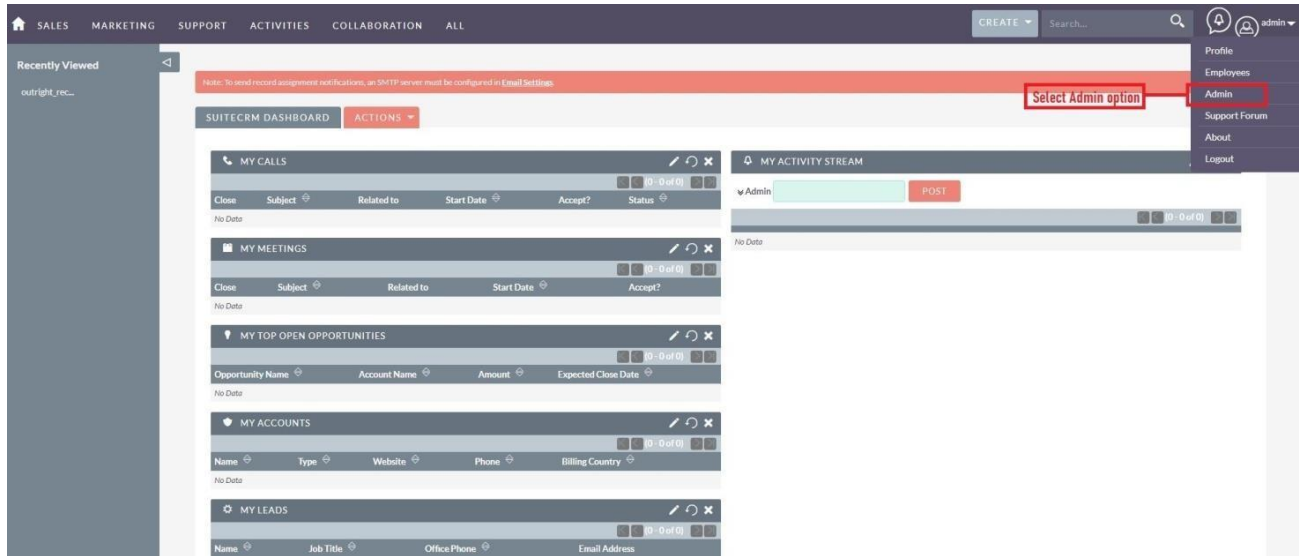


**SuiteCRM RocketReach (Lite)**

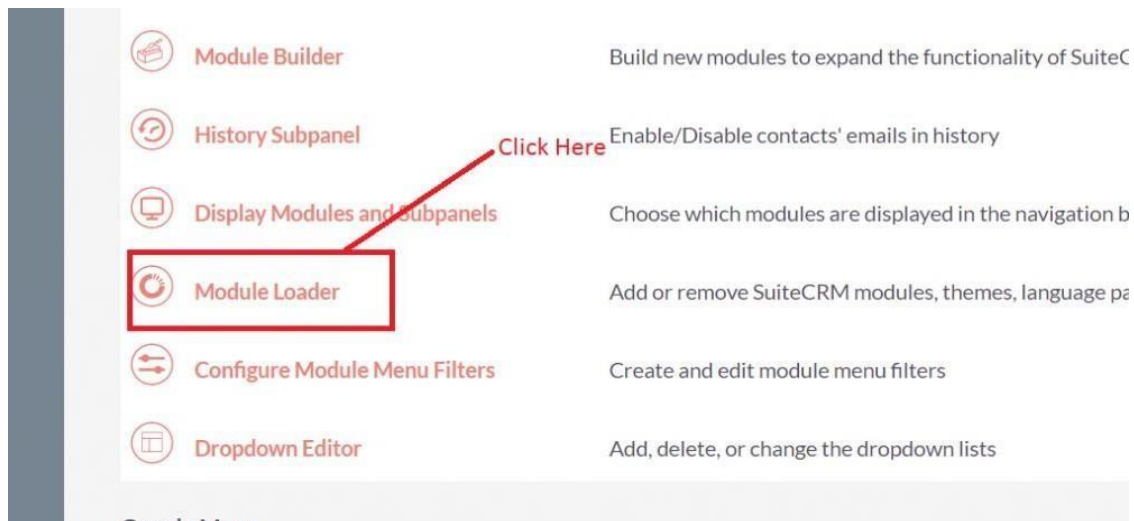
# **Installation & Configuration Guide**

# Installation Guide

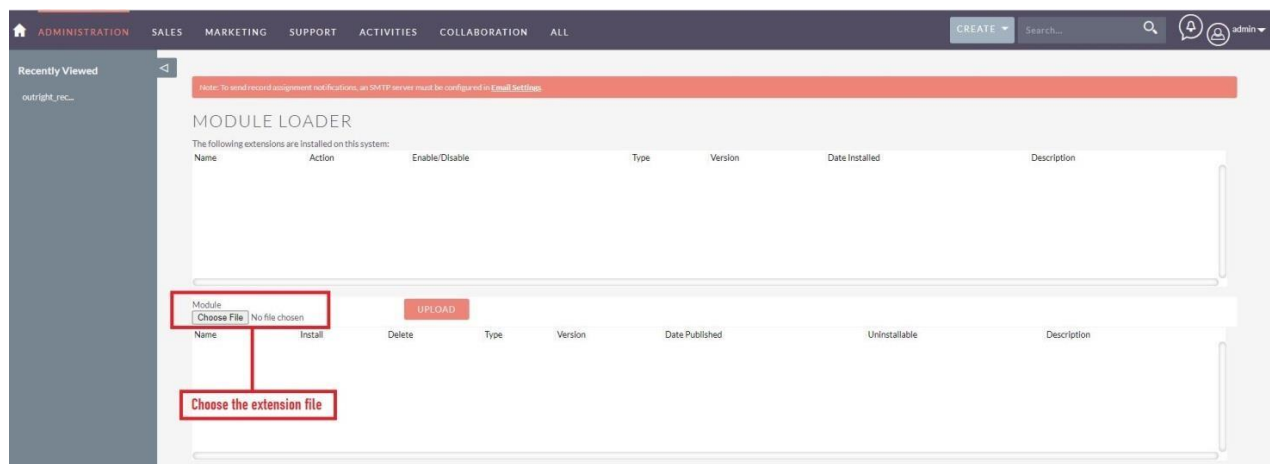
1. Go to the Administration page.



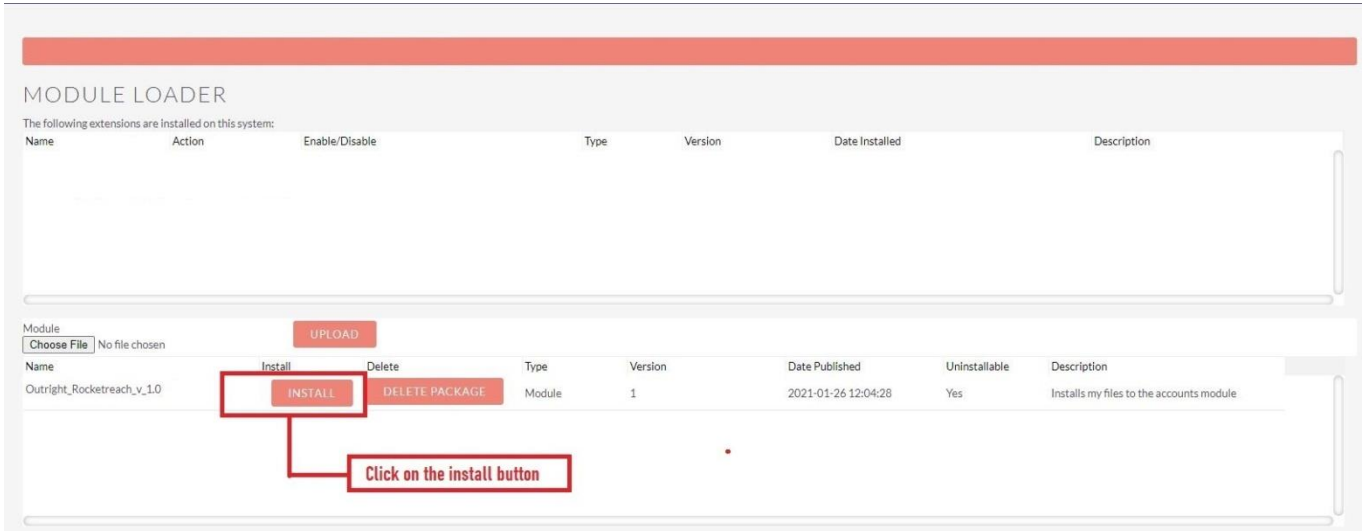
2. Click on “Module Loader” to install the package.



3. Click on the “Choose File” and after that select the Upload button.



4. Then click on the install button to begin the process.



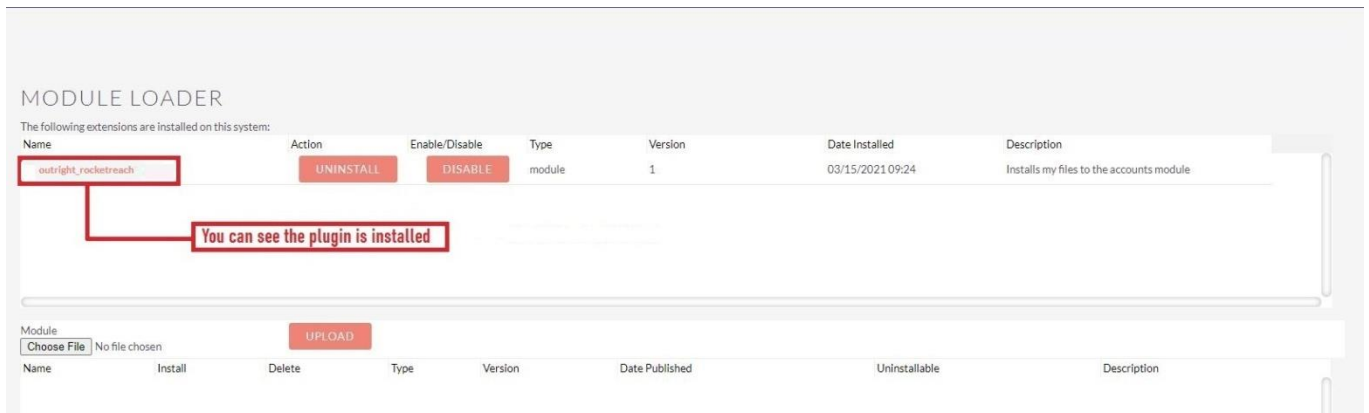
5. In the next step, you need to click on the “Commit” button.



6. Once the installation is 100% complete, click on the “**Back to Module Loader**” button.



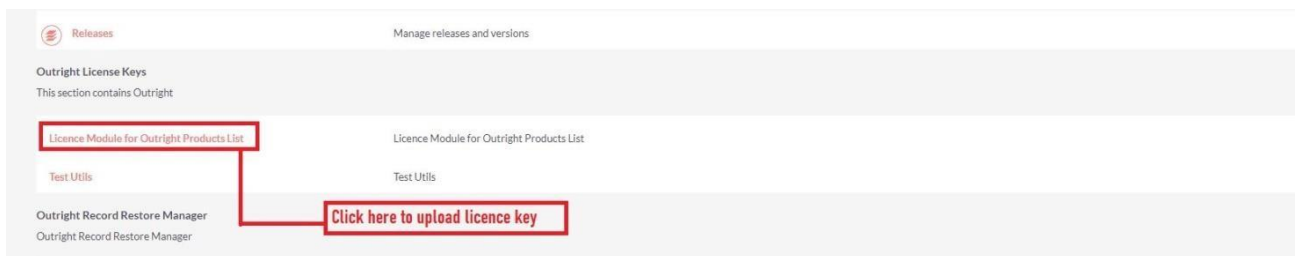
7. The installation of **RocketReach** extension is now completed successfully.



8. Now the installation is finished, we’ll start configuration. For this go back to Admin panel.

## Configuration

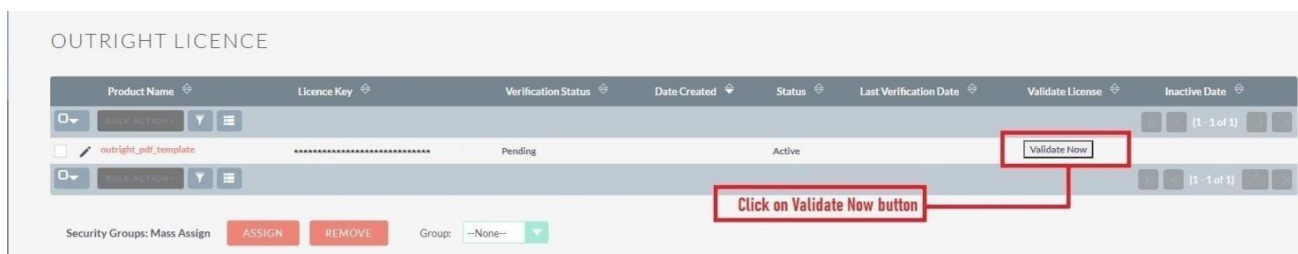
1. In the admin panel, click on the **“Licence Module for Outright Product List”** link.



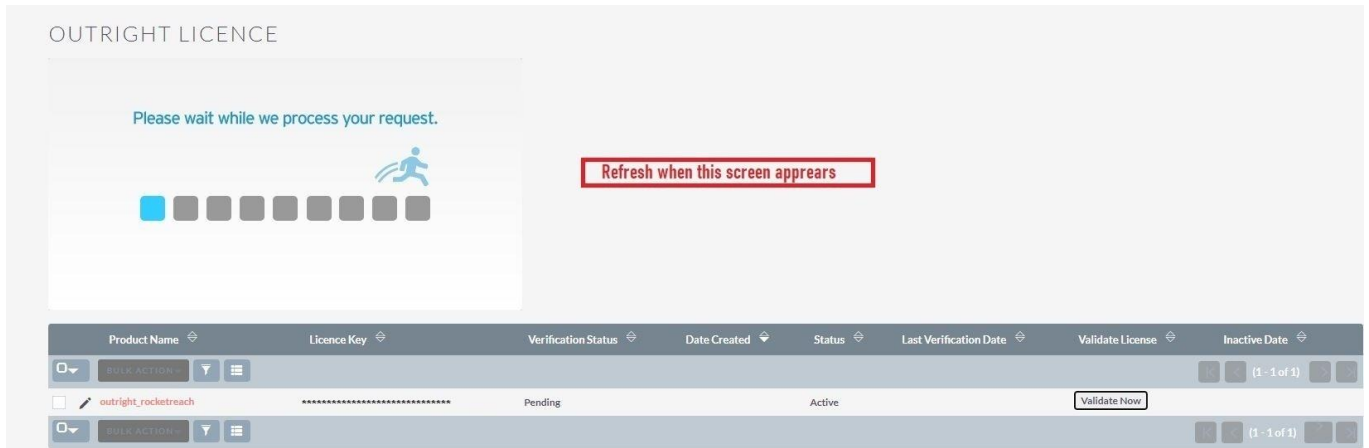
2. Enter the Product’s Licence Key and click on the Save button.



3. After that, click on the **“Validate Now”** button.



4. When below screen appear, you need to Refresh the page.



5. As you can see the extension is verified successfully.

