



# SugarCRM Email2Lead

## Installation Guide

# Pre-requisites

Please follow the below steps before installing the Record Receiver.

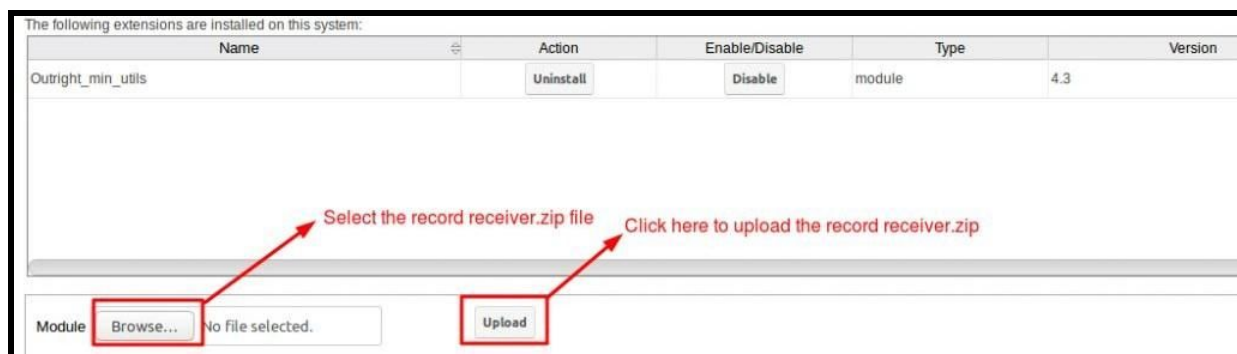
1. Log in as an Administrator.
2. Verify the CRM version should be compatible with Record Receiver.
3. CRM should have the [Outright utils](#), if not then install the OutrightUtils package first then install the Record Receiver.
4. You must have a Group Inbound account to configure the Record Receiver.
5. Cron Job must be set up in CRM.

## Installation Guide:-

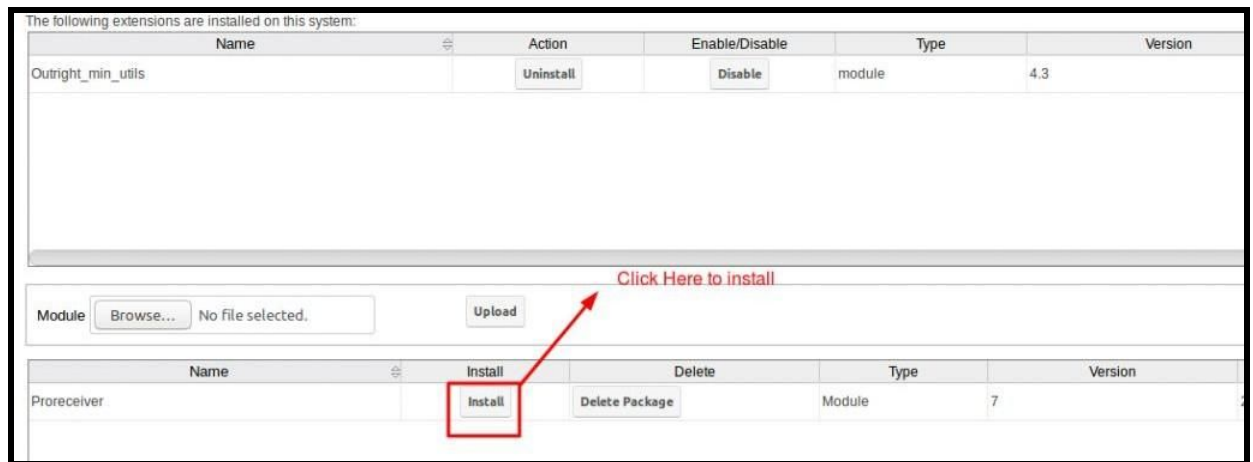
1. Go to the Administration page.
2. Click on “**Module Loader**” to install the package.



3. Click on "Choose File" button and select the Record Receiver.zip.



- Click on **"Upload"** to upload the file in CRM and then click on the Install button.



- Again go to the Administration page and click on repair.



- Click on **"Quick Repair and Rebuild"** and click on execute button.

**NOTE:** After Installing each plugin, It is mandatory to repair and execute.