



## Global Hide Manager

### Installation Guide



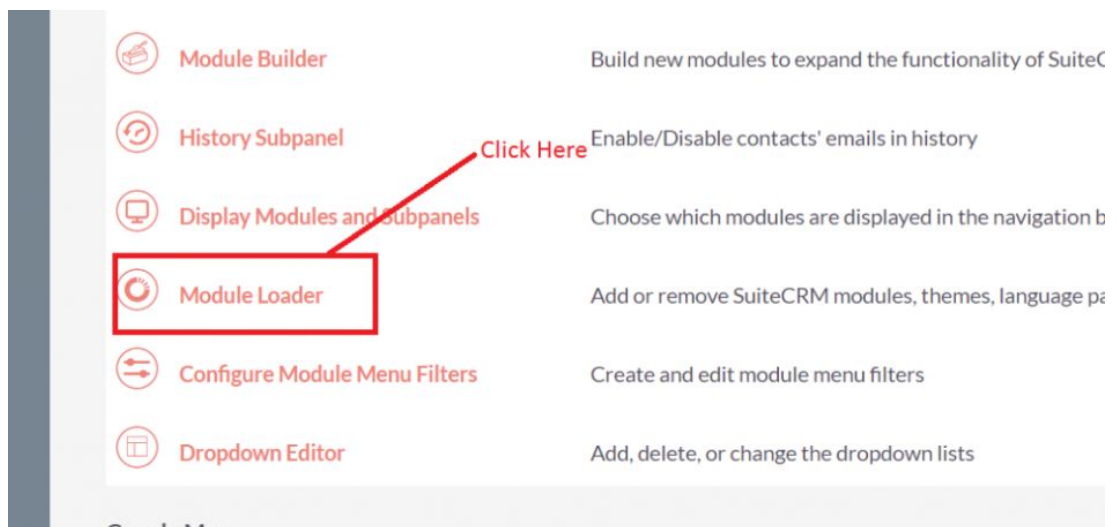
## Pre-requisites

Please follow the below steps before installing the Global Hide Manager.

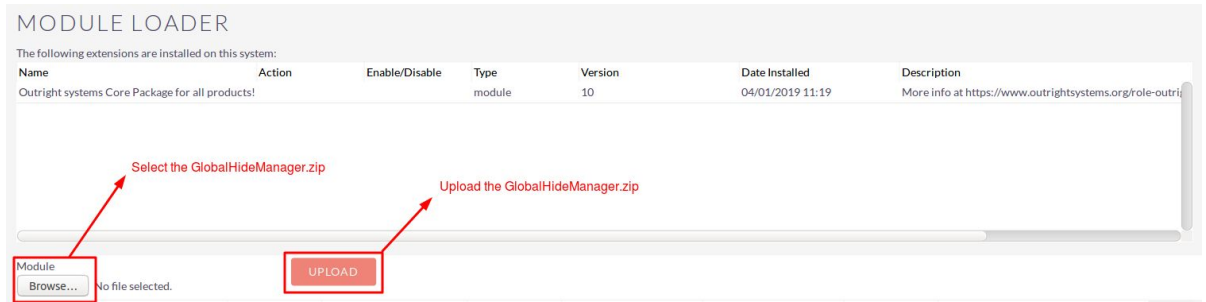
1. Log in as an Administrator.
2. Verify the CRM version should be compatible with Global Hide Manager.
3. CRM should have the Outright utils file, if not then install the Outright Utils package first then install Global Hide Manager.

## Installation Guide:-

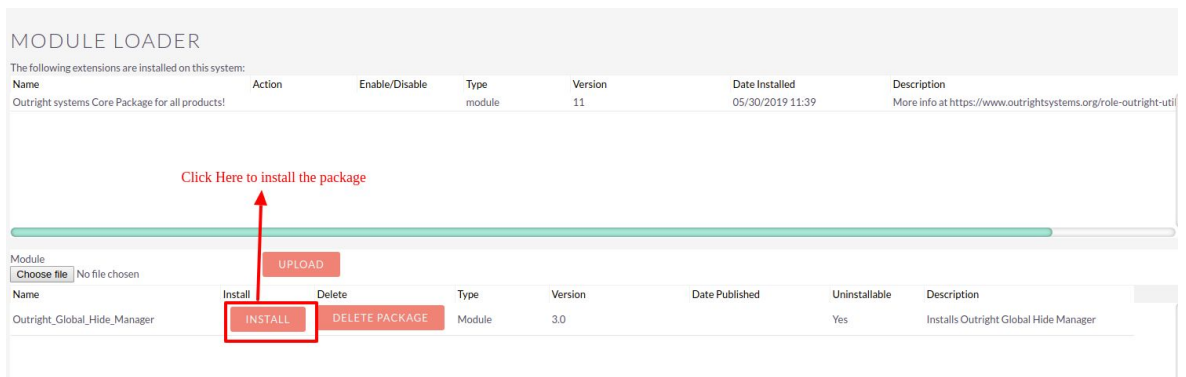
1. Go to the Administration page.
2. Click on “**Module Loader**” to install the package.



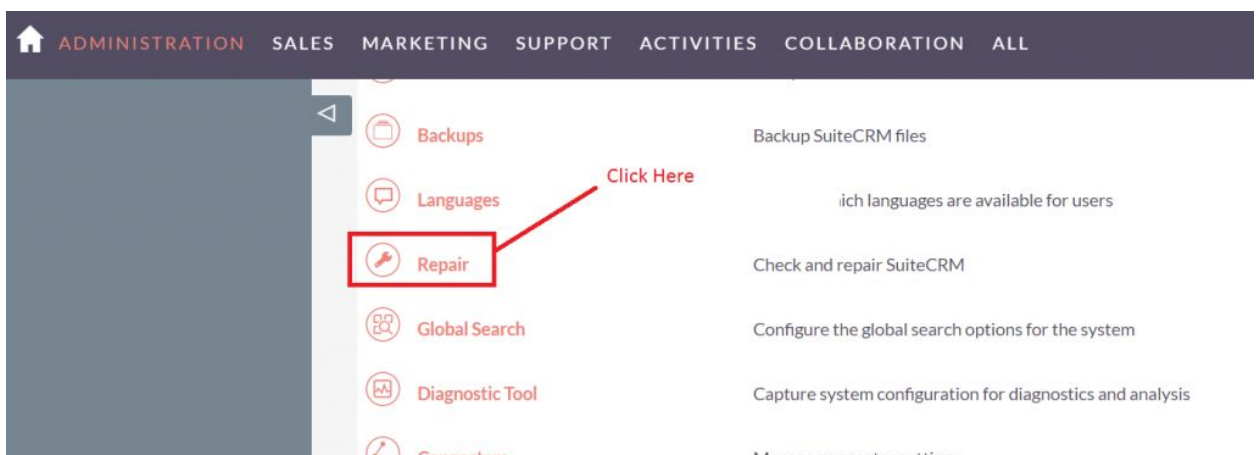
3. Click on "Choose File" button and select the GlobalHideManager.zip



4. Click on "Upload" to upload the file in CRM and then click on the Install button.



5. Again go to the Administration page and click on repair.



6. Click on "**Quick Repair and Rebuild**" and click on the execute button.

**NOTE:** any changes you make to the script in the textbox will be reflected in the exported or executed code.

```
/* Table : outr_global_hide_manager */
/* MISSING TABLE: outr_global_hide_manager */
CREATE TABLE outr_global_hide_manager (id char(36) NOT NULL ,name varchar(255) NULL ,date_entered datetime
NULL ,date_modified datetime NULL ,modified_user_id char(36) NULL ,created_by char(36) NULL ,description text
NULL ,deleted bool DEFAULT '0' NULL ,assigned_user_id char(36) NULL ,status varchar(255) NULL ,element_id
varchar(100) NULL ,element_class varchar(100) NULL ,mod_name varchar(255) NULL , PRIMARY KEY (id))
CHARACTER SET utf8 COLLATE utf8_general_ci;
```

Click here to execute the above queries

EXECUTE EXPORT

**NOTE:** After installing each plugin, It is mandatory to repair and execute.