



SuiteCRM Record Restore Manager

Installation Guide

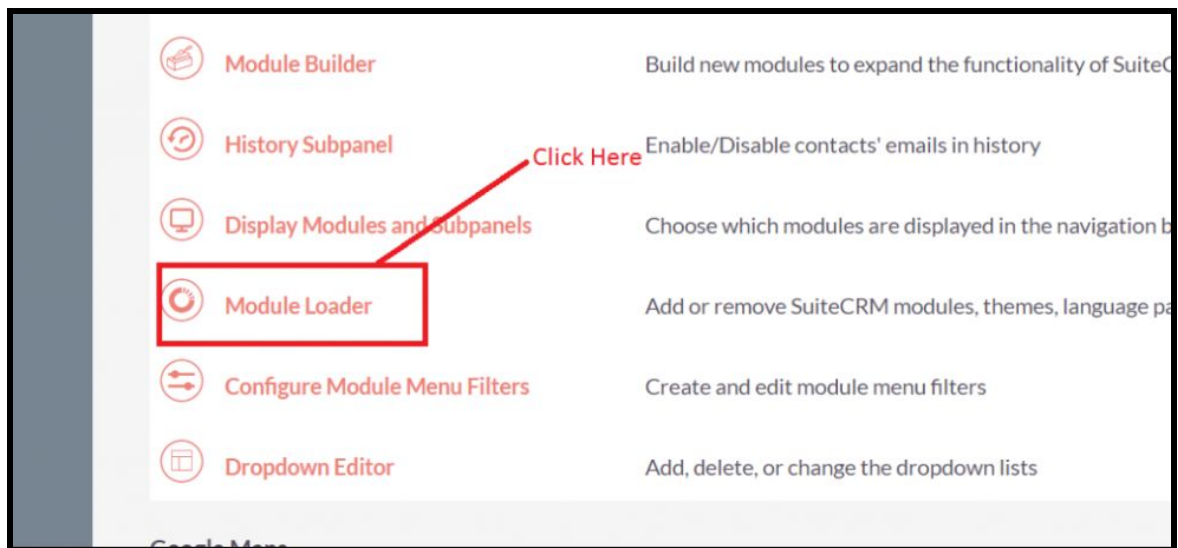
Pre-requisites

Please follow the below steps before installing the Record Restore Manager.

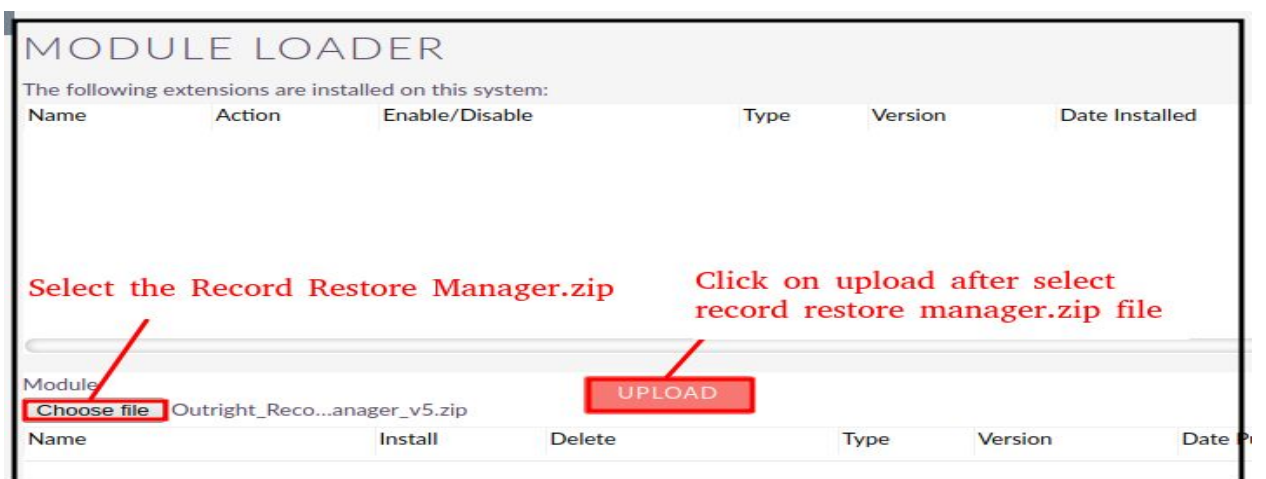
1. Log in as an Administrator.
2. Verify the CRM version should be compatible with Record Restore Manager.
3. install the Outright Record Restore Manager.

Installation Guide

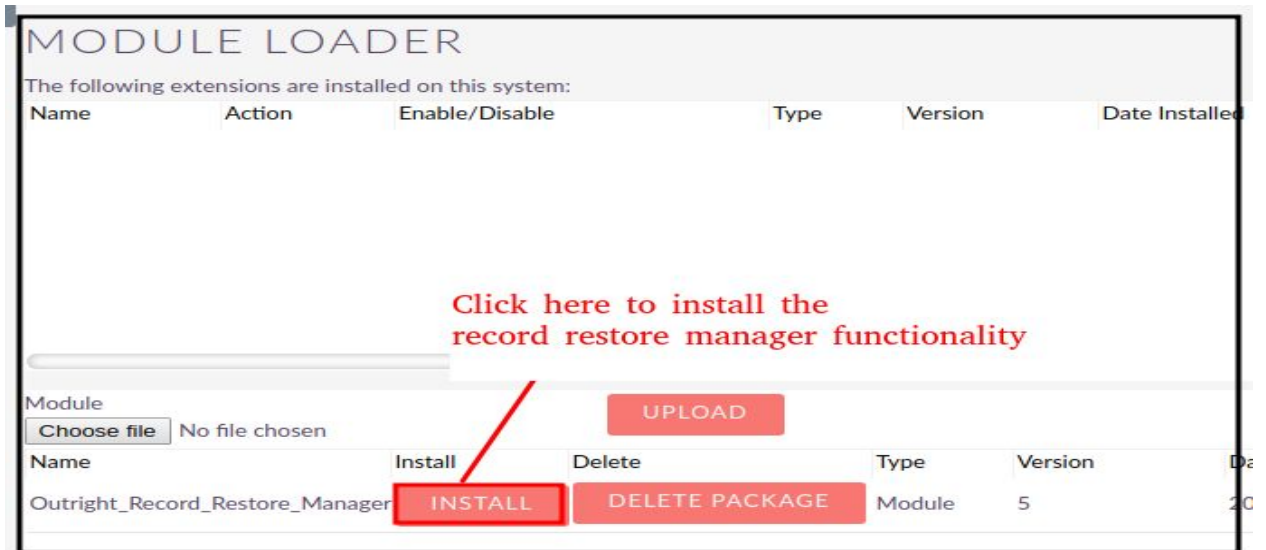
1. Go to the Administration page.
2. Click on “**Module Loader**” to install the package.



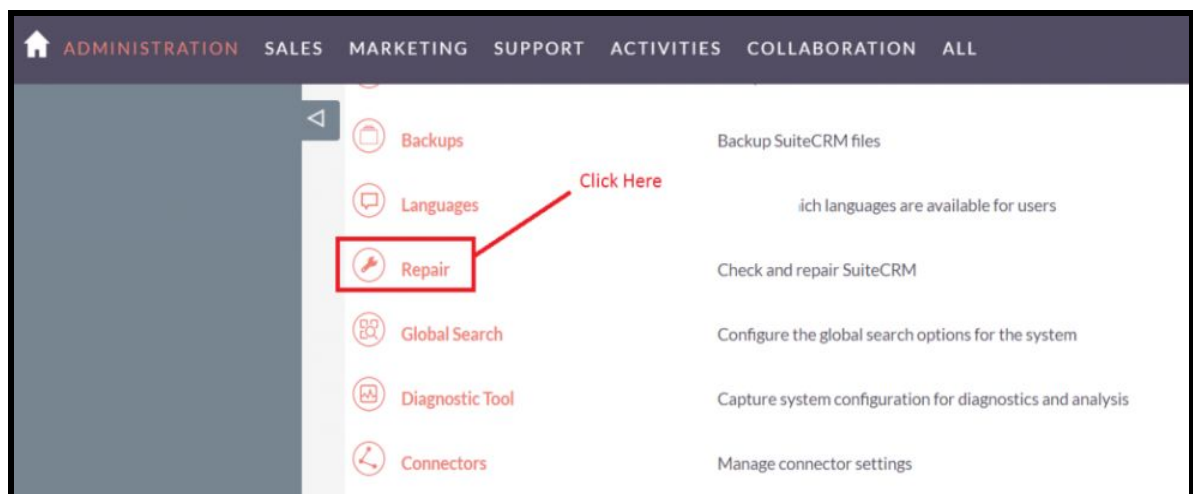
3. Click on the “**Choose File**” button and select the Record Restore manager.zip.



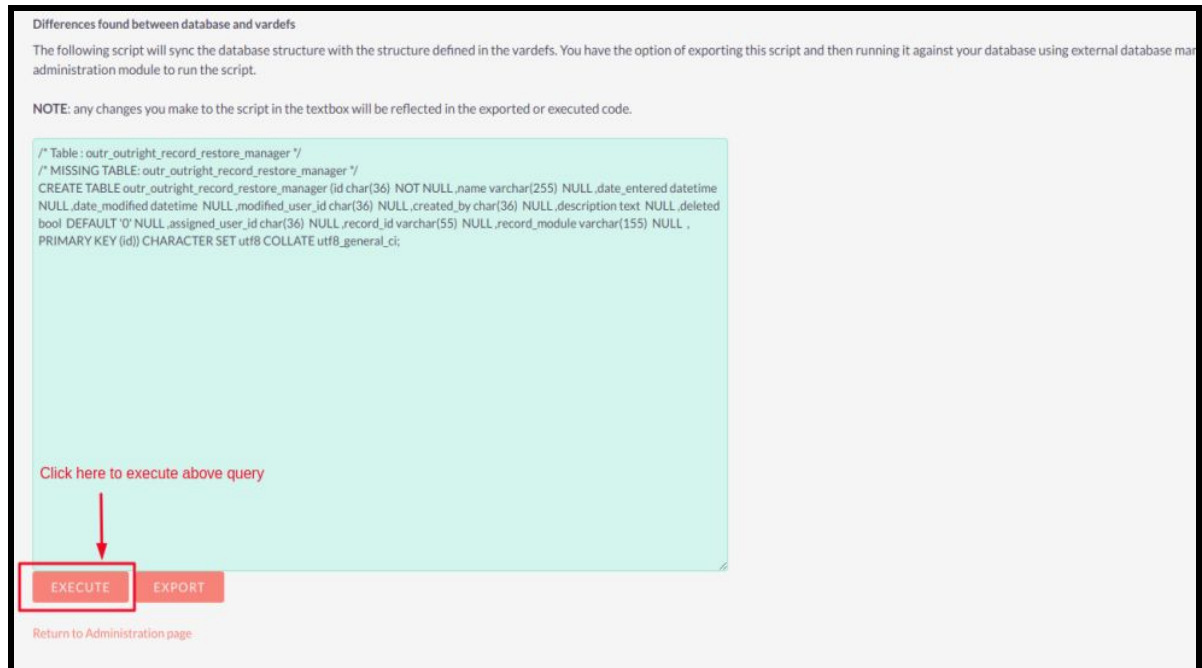
4. Click on “Upload” to upload the file in CRM and then click on the Install button.



5. Again go to the Administration page and click on repair.



6. Click on **"Quick Repair and Rebuild"** and click on the execute button.



NOTE -: *After installing each plugin, It is mandatory to repair and execute.*